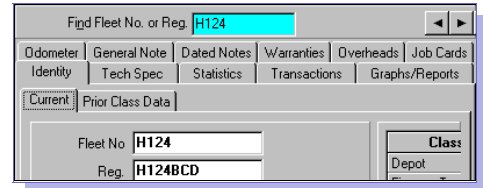


Tab to the information you need

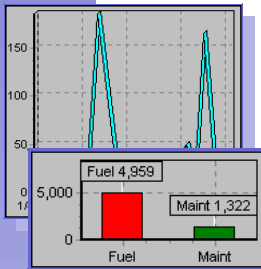
There is a range of information held on each vehicle. This is available in a tabbed notebook format. In this example, the 'Identity' tab has been selected:



The full identity screen includes Fleet Number, Registration Number, Make and Model. There are also user specified fields that can be tailored to your requirements. These can include details that are specific to your organisation such as 'depot', 'cost-code', 'department'. The vehicle's 'Techspec' tab provides additional space for vehicle details such as 'gross weight' and 'tyre size'.

Tab to performance

Analysis of vehicle performance is equally accessible. The 'Statistics' tab shows the comparative life costs for different transaction types.

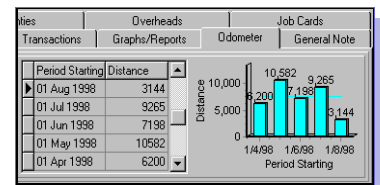


The 'Graphs and Reports' tab provides performance information over time. The example here shows pence per mile costs for maintenance. Similar graphs for tyres, fuel, and other costs are also available.

The figures backing up these graphs are also shown.

Usage information

The odometer tab graphically presents usage levels (in miles/kilometres or hours).



Cost details

All vehicle costs for the life of the vehicle can be easily viewed. These includes fuel fillings, scheduled services, parts, labour, fixed overhead costs.

The transactions are colour coded for easy reference:

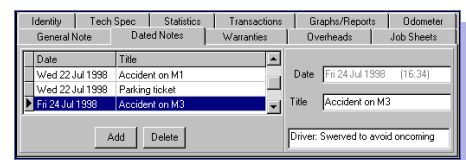
Trans	Date	Description
Maint	21 Sep 1998	Battery
Maint	30 Aug 1998	Safety Inspection
Fuel	29 Aug 1998	Diesel
Fuel	28 Aug 1998	Diesel

- Red** for not yet completed, for example a defect report that has not yet been done.
- Yellow** for being done, for example a service, task or part that is currently being dealt with in your own workshop or by an external contractor.
- Blue** for completed, for example a fuel filling, service, task or part that has already been done.
- Grey** for future items, for example a service that is pending.

Transactions can be filtered to show only the information you require. For example, only the labour for 'brakes' above £100.

Accidents and incidents

Notes organised in date order can be used to record incidents and accidents. The details - shown on the right - are easily accessed by reference to the headings - shown on the left.



Warranties

All the vehicle warranty details are shown on this tab.

Warranty Expiry	Description	Date Filed	Cost	Warranty State	Purch Invoiced	Supplier	Serial Number
24/07/98	Dutch	24/07/98	£567.00	Repair			
24/07/98	Battery	24/07/98	£123.00				
23/07/00	Starter Motor	24/07/98	£127.00				