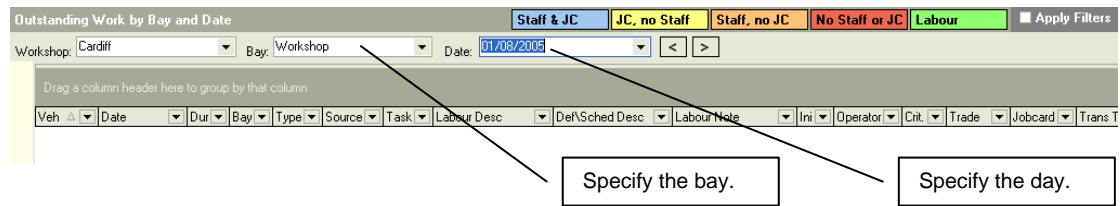


Freeway Bays Training Worksheet

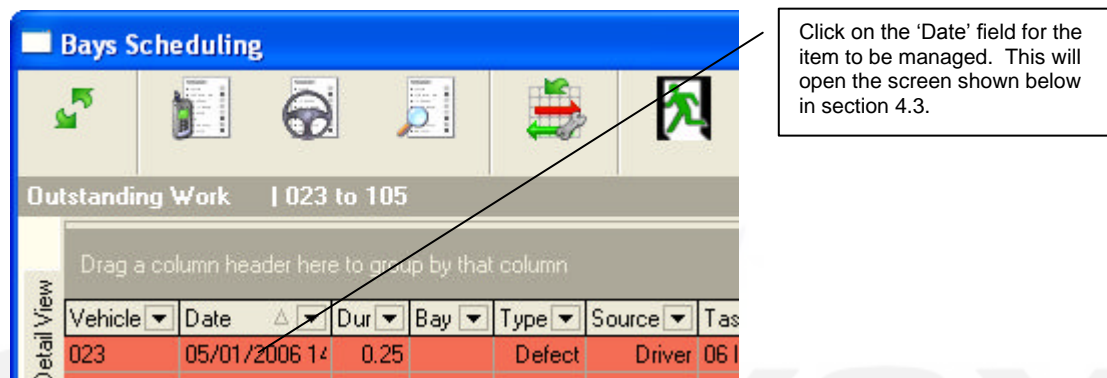
Action a defect:

1. Specify the Bay and Day that you are working on.



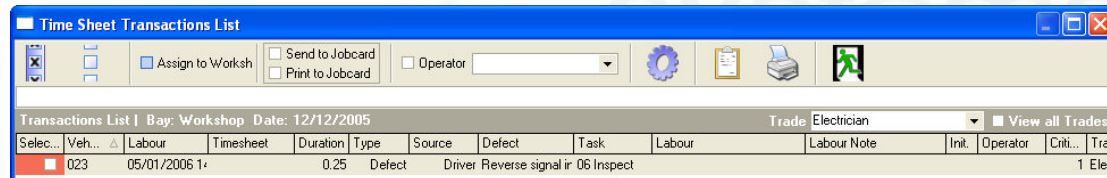
Often the day will be today – but it is possible to specify a future date and in that way load the workshop with items several days in advance.

2. Click on the defect to be managed.

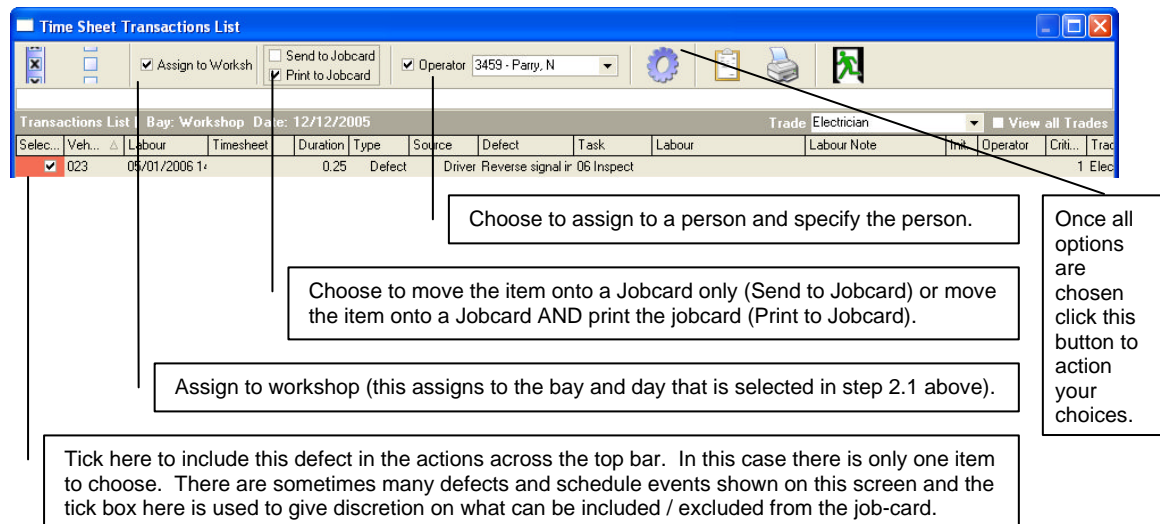


3. Specify the actions for the defect.

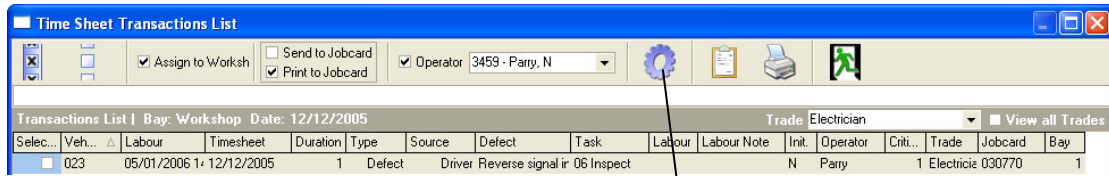
This image shows the screen before the actions are assigned:



This image shows the screen after the actions are assigned:



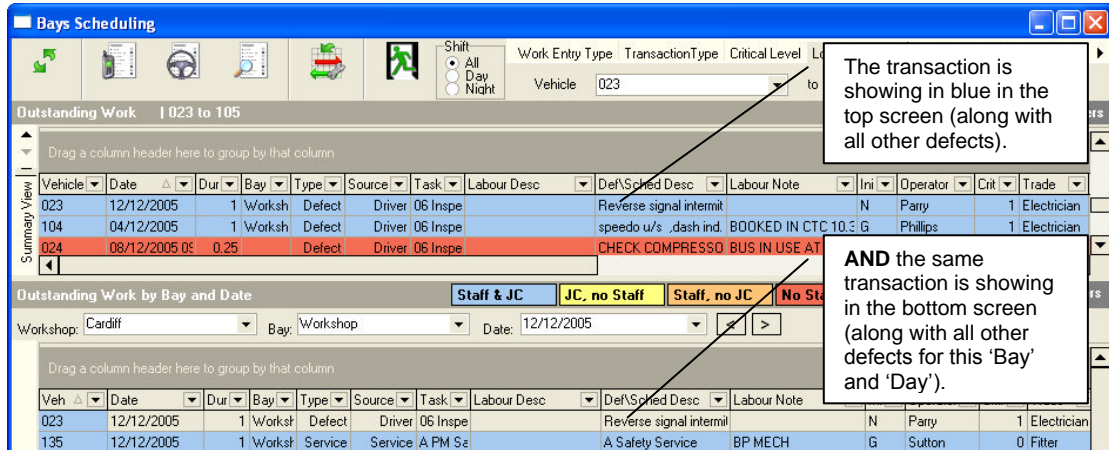
4. Note effect of processing the allocation



This screen shows the same record after this 'process' button is selected.

- Jobcard Number has been assigned to the item
- Operator has been assigned, and
- Bay has been assigned.

On exit of the above screen and refresh:



The transaction is showing in blue in the top screen (along with all other defects).

AND the same transaction is showing in the bottom screen (along with all other defects for this 'Bay' and 'Day').

