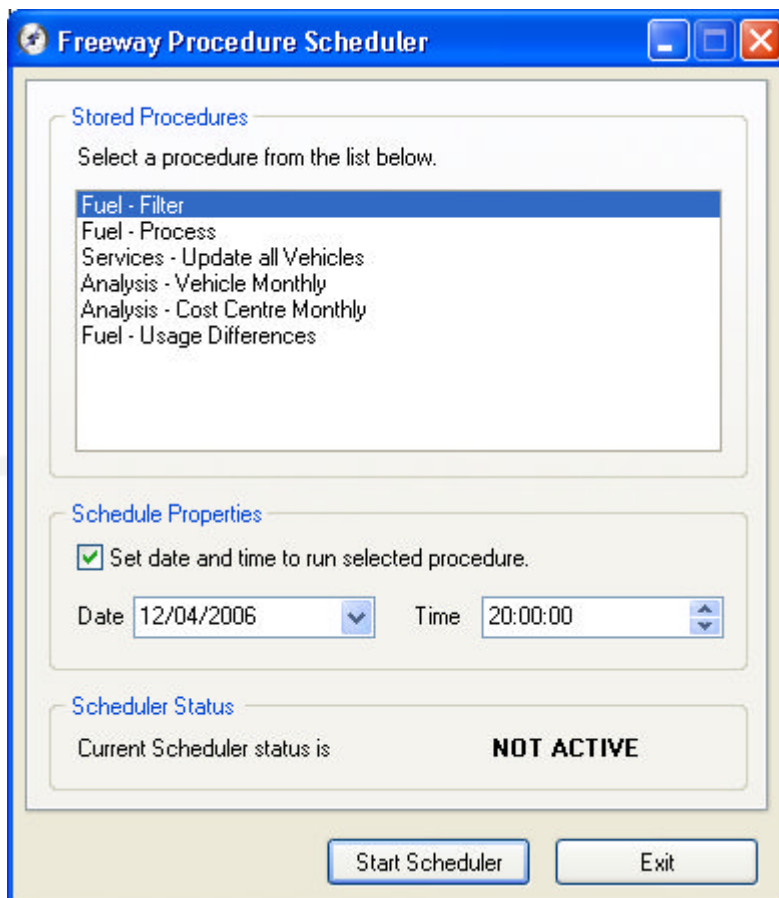


## Freeway Fuel Filter & Process Training Worksheet

### 1. Filter & Process Fuel Data with the Scheduler

The Freeway Scheduler is used to perform useful tasks on the Freeway Database after hours when the database is not in constant use. Executing "Fschedule.exe", found in the Freeway installation folder starts the scheduler.

1. Activate the procedures "Fuel – Filter" and "Fuel – Process" to run at specific times and start the scheduler. A log file may be viewed after it is run for more details on what the scheduler did and when. Note: filtering a month of data will take about one minute per 400 vehicles. It is recommended to leave at least ten minutes between these procedures.



Only filtered data can be processed. A list of imported fuel data that has not been filtered successfully can be viewed in the fuelling exceptions report. This data needs to be edited in the Asset Details window in Freeway before it can be filtered.