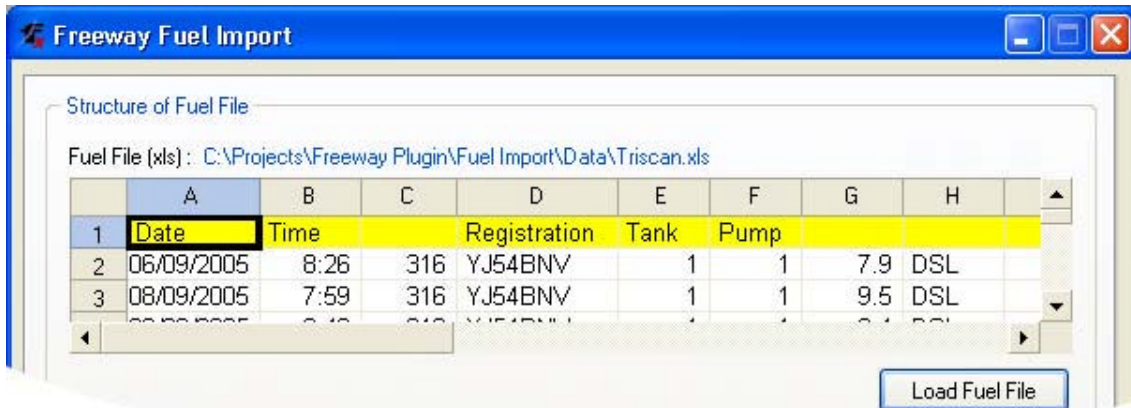


Freeway Fuel Import Training Worksheet

Import Fuel Data from External Application using saved settings file

1. Run the FuelImport.exe application in the Freeway folder.
2. Click the "Load Fuel File" button near the top right of the window. Select a valid Excel file to import. A preview of the data available to be imported from the Excel file will be displayed in the window.



3. Click "Load Settings" to use a settings from a saved settings file.



4. Freeway will enter by default the beginning to the end of the previous month.
5. Click "Verify" to do a preliminary check to see if your data will import with the settings you have given. If there are problems with the data in any columns, these areas will be highlighted so that you know where to make corrections in Excel.
6. If there are no problems, click "Import".
7. Close the FuelImport.exe application.